

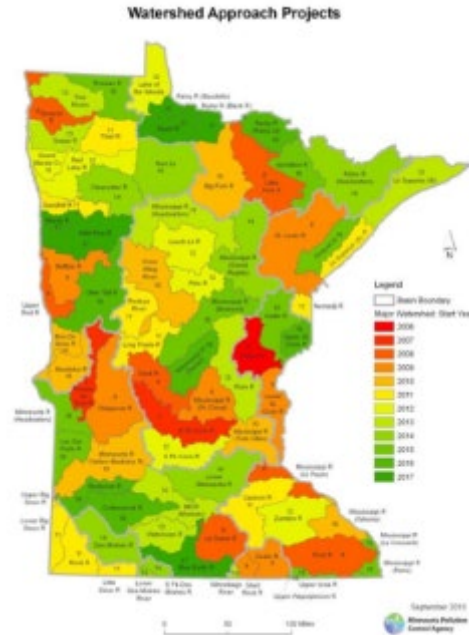
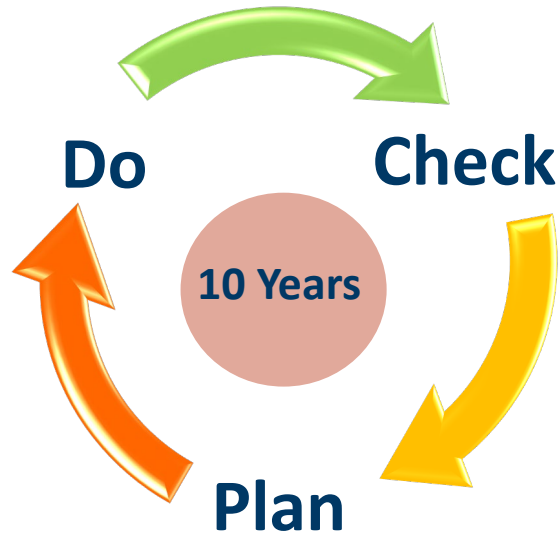


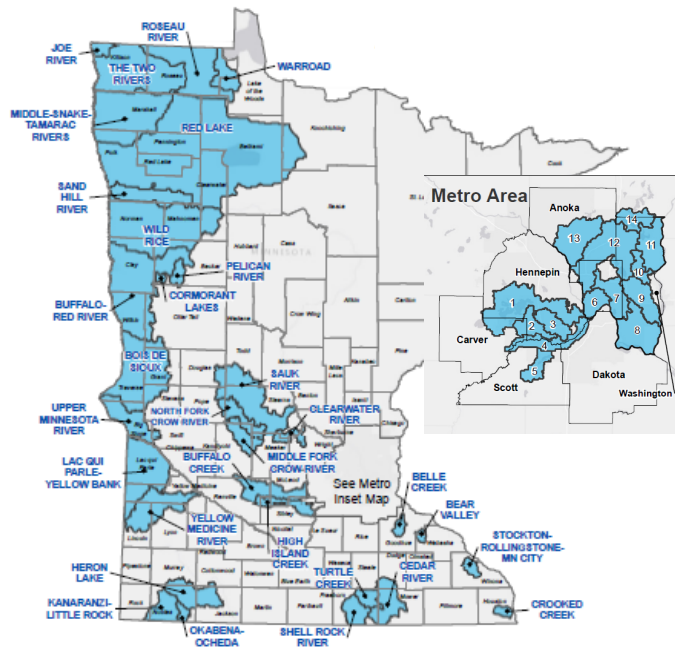
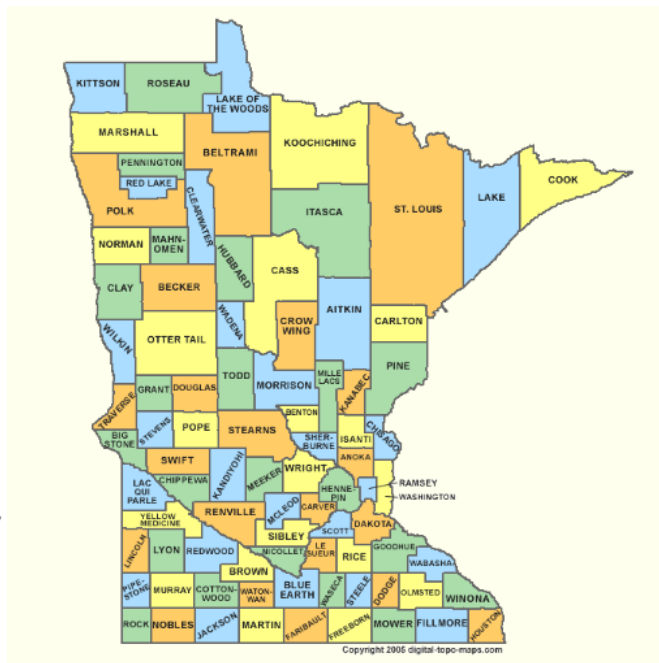
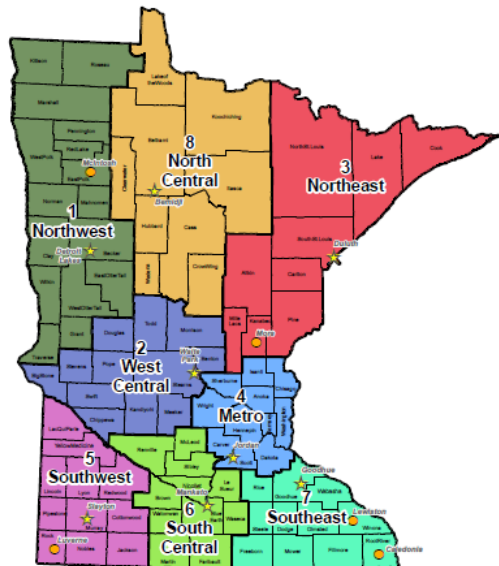
One Watershed, One Plan Overview

Julie Westerlund, Program Coordinator



The Watershed Approach

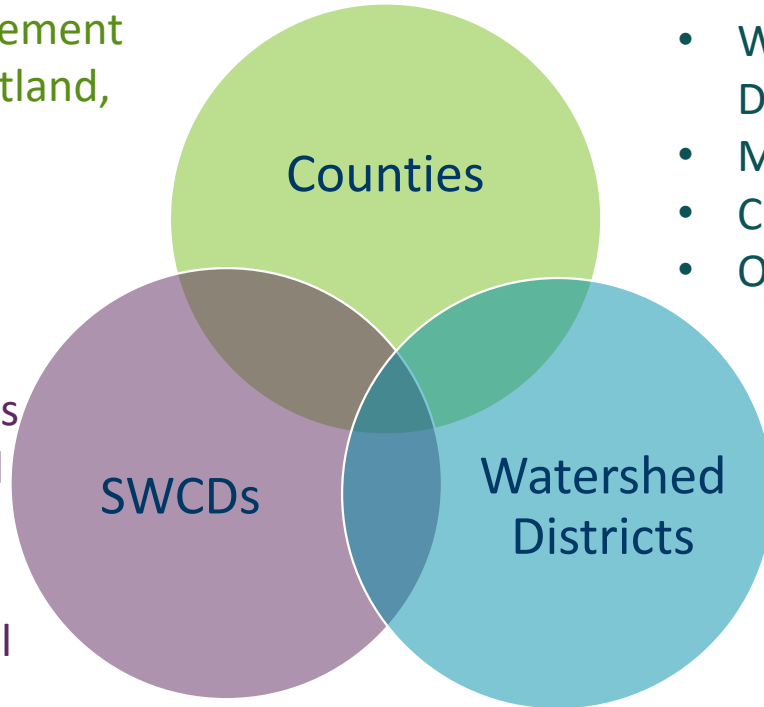




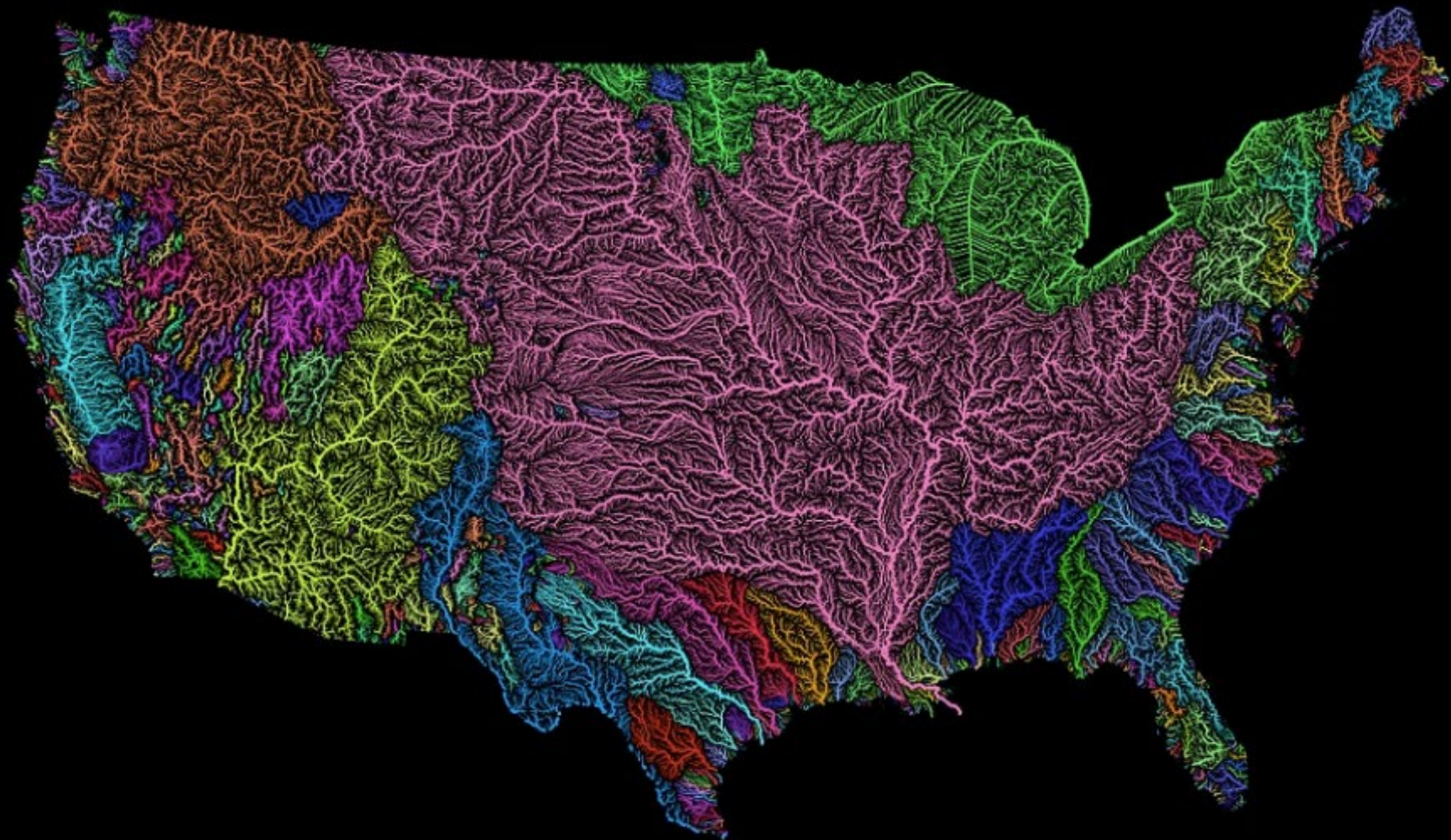
Minnesota Water Planning Authorities

- Regulations and land management (zoning, SSTS, shoreland, wetland, feedlot, forestry)
- Drainage
- Public Health

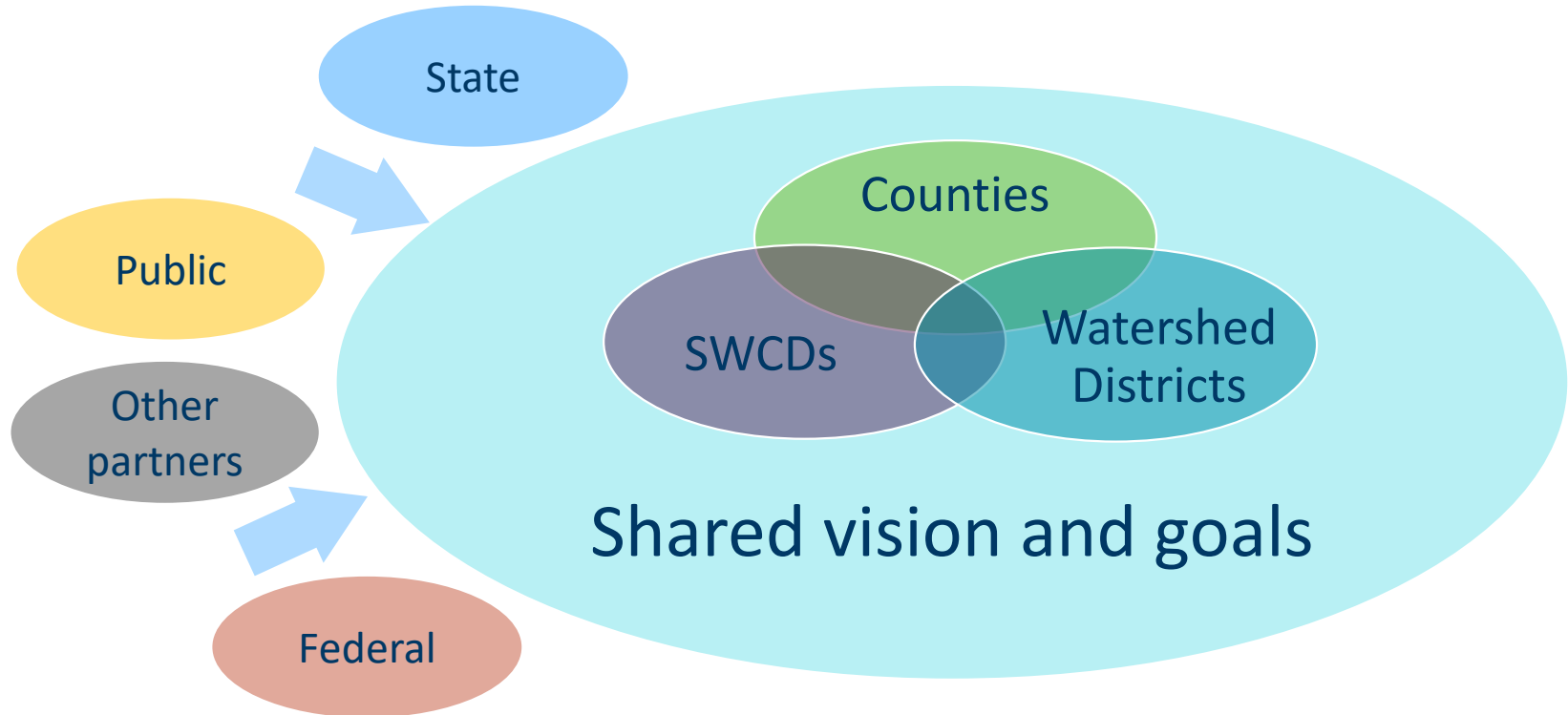
- Investigate problems and identify preventative practices
- Implement projects with land occupier consent – provide technical and financial help
- Can accept delegation of local ordinances and controls



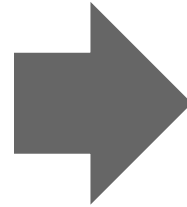
- Watershed management
Drainage
- Monitoring
- Capital Projects
- Outreach Programs



Planning Concept



Evolution of Water Planning





1937: Soil Conservation Law



1955: Watershed Act



1972: Federal Clean Water Act



1982: Metro Surface Water Mgmt. Act

1930s

1940s

1950s

1960s

1970s

1980s

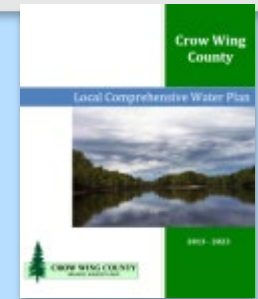
1938: First SWCD formed



1957: First Watershed District

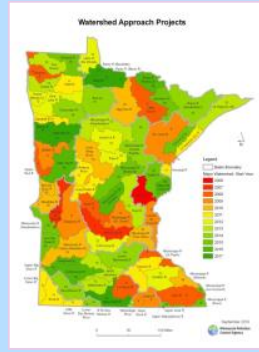


1987: County Water Management Act

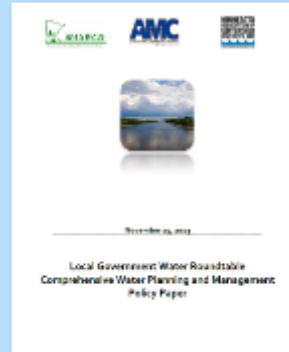




2002: Legislative Auditor's Report



2006: Clean Water Legacy Act



2010: Local Gov't Water Roundtable



2013: Clean Water Accountability Act



2017: Watershed Based Funding



2004: Annandale & Maple Lake case

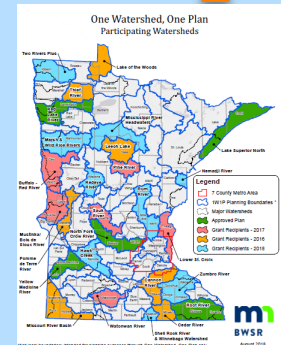
2008: Clean Water Land & Legacy Amdt



2012: Local water mgmt. coordination



2015: Comprehensive Watershed Management Plans



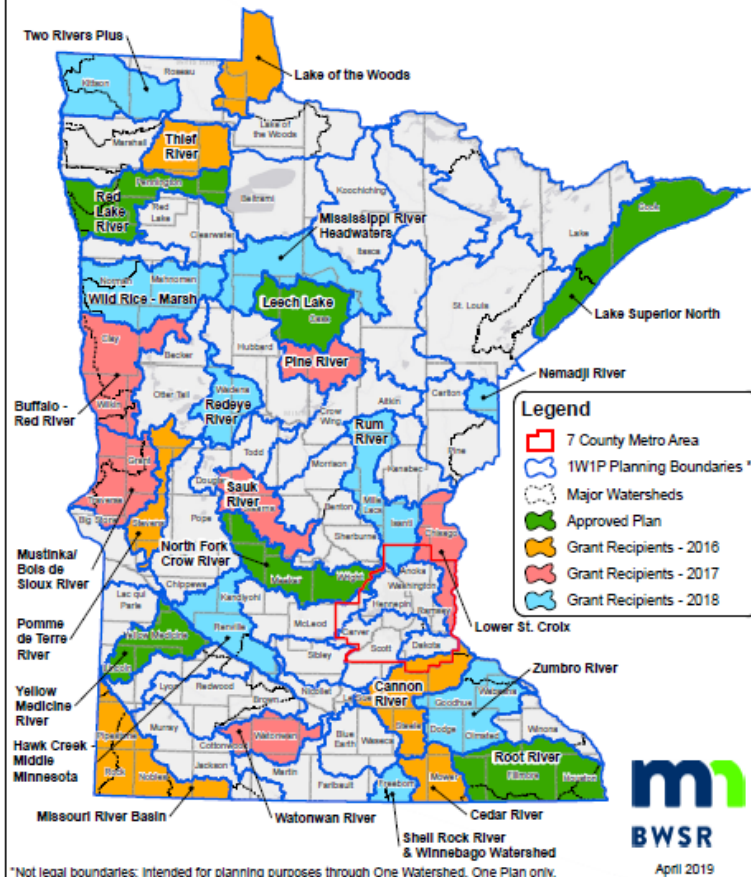


**One Watershed
One Plan**

Develop prioritized, targeted and measurable local implementation plans aligned with state strategies on major watershed boundaries.

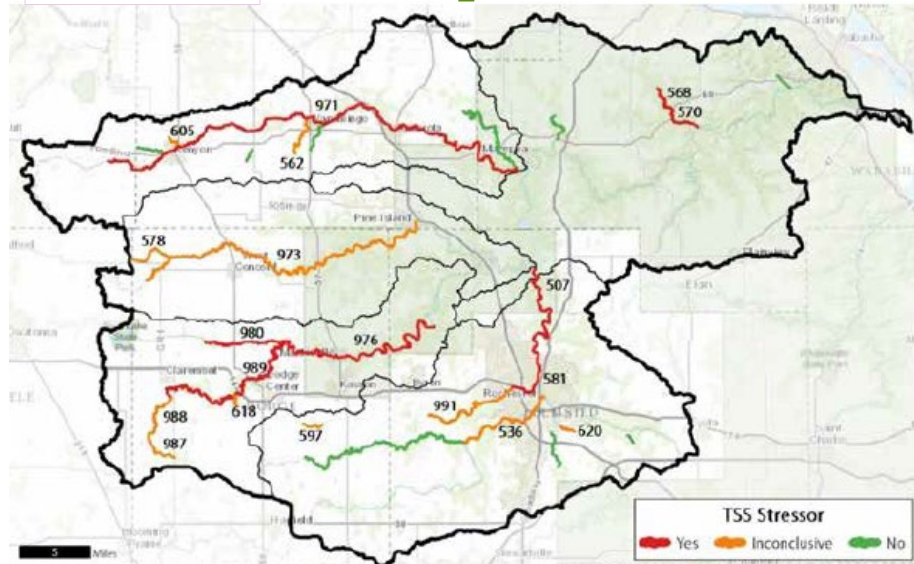


One Watershed, One Plan Participating Watersheds



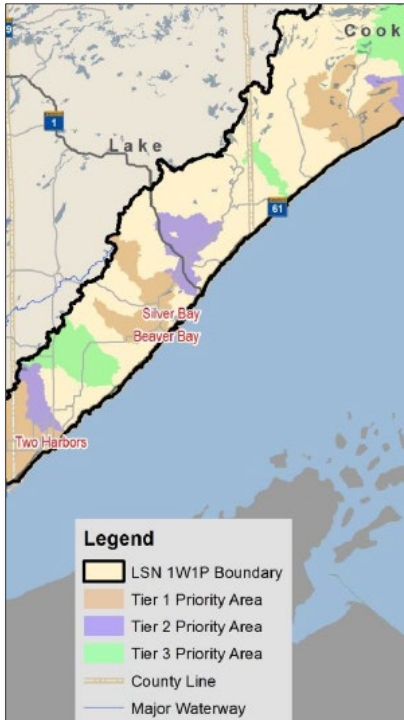


Planning links data to action

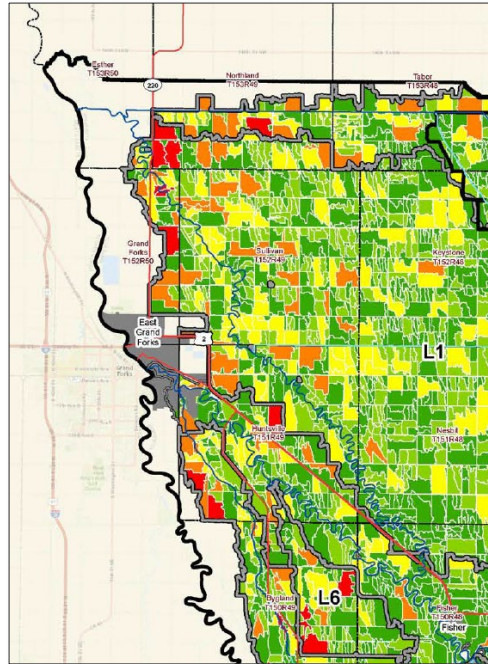


Prioritize, Target, Measure

Prioritize



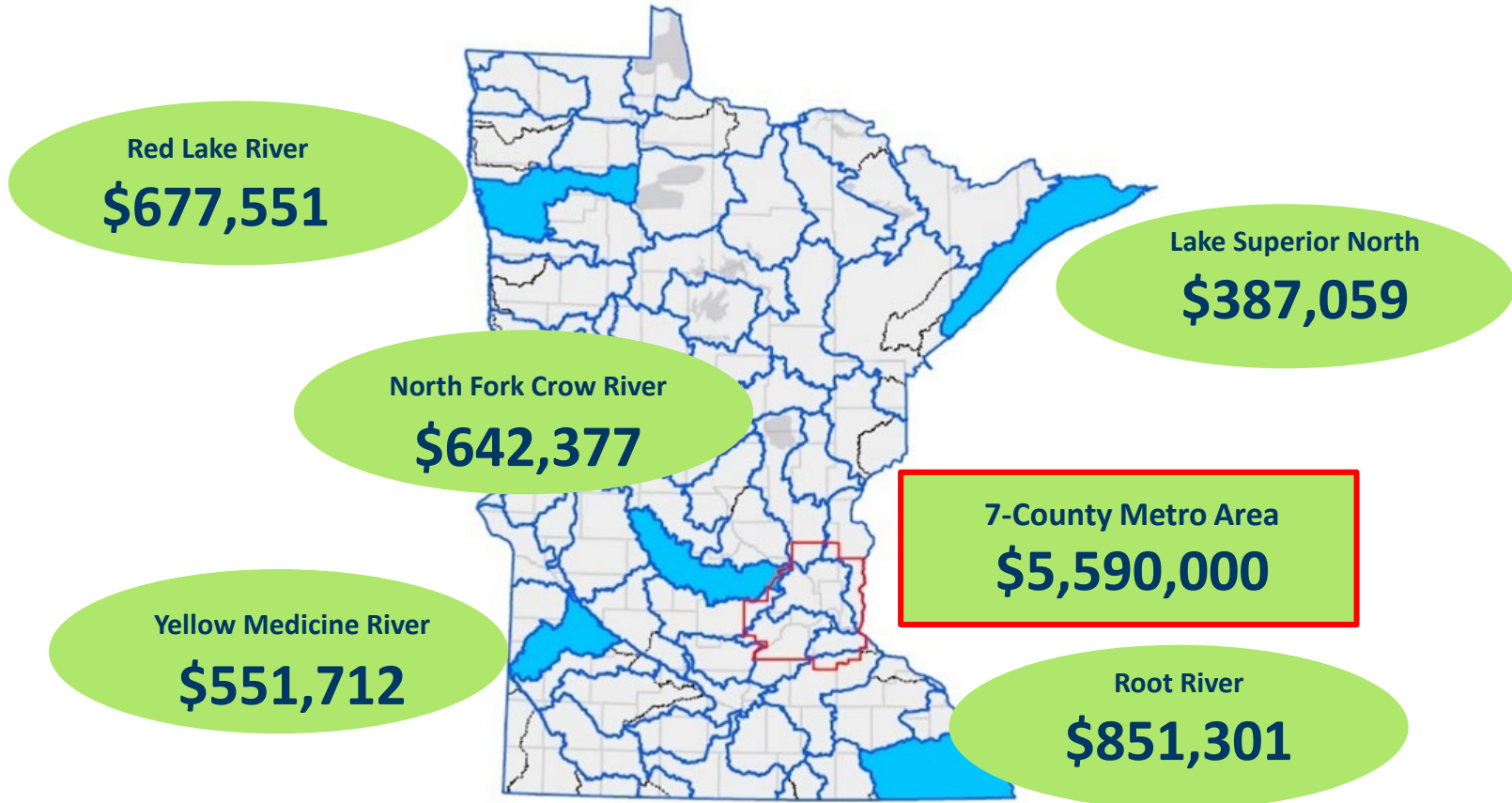
Target



Measurable Goal

Root River Sediment Reduction Goals		
Goal	10-Year	Long-Term ^(a)
Tons/year	6,440	31,321
Percent	21	45
Long-term goal based on MN Sediment Reduction Strategy		

Watershed-Based Funding Pilot Program



One Watershed, One Plan Guidebook



Purpose:

The *One Watershed, One Plan Guidebook* is a series of supporting information documents for the *One Watershed, One Plan - Plan Content Requirements*. The documents contain definitions, examples, and considerations to help stimulate discussions and provide direction as planning groups move through each phase of the planning process. The following is not program policy, but rather, is intended to serve as a resource and point of reference for developing comprehensive watershed management plans.

For program policy, please see:

- One Watershed, One Plan – Plan Content Requirements
- One Watershed, One Plan Operating Procedures
- One Watershed, One Plan Guiding Principles



More Information on 1W1P

sr.state.mn.us/one-watershed-one-plan State of Minnesota [US] Search...
Movi... Inbox (29) - julie.westerlund@... 23 Google Calendar - May 2019 Your To-Do List ✓ Toodledo One Watershed, One Plan | ... x ago-ite
es Tools Help

One Watershed, One Plan

[http://www.bwsr.state.mn.us/
planning/1W1P/index.html](http://www.bwsr.state.mn.us/planning/1W1P/index.html)

